

ERASMUS  
HOGESCHOOL  
BRUSSELS



# Harnessing Charging Power

The Communication Issues of Electric Vehicle  
Charging Infrastructure from a Standardization  
Point of View

*Peter VAN DEN BOSSCHE*

*Erasmus University College Brussels & Vrije Universiteit Brussel*

*Secretary of IEC TC69*

# Overview



- Introduction: the EV standards landscape
- Charging standardization
- Standard accessories
- Charging performance and the grid
- Communication issues

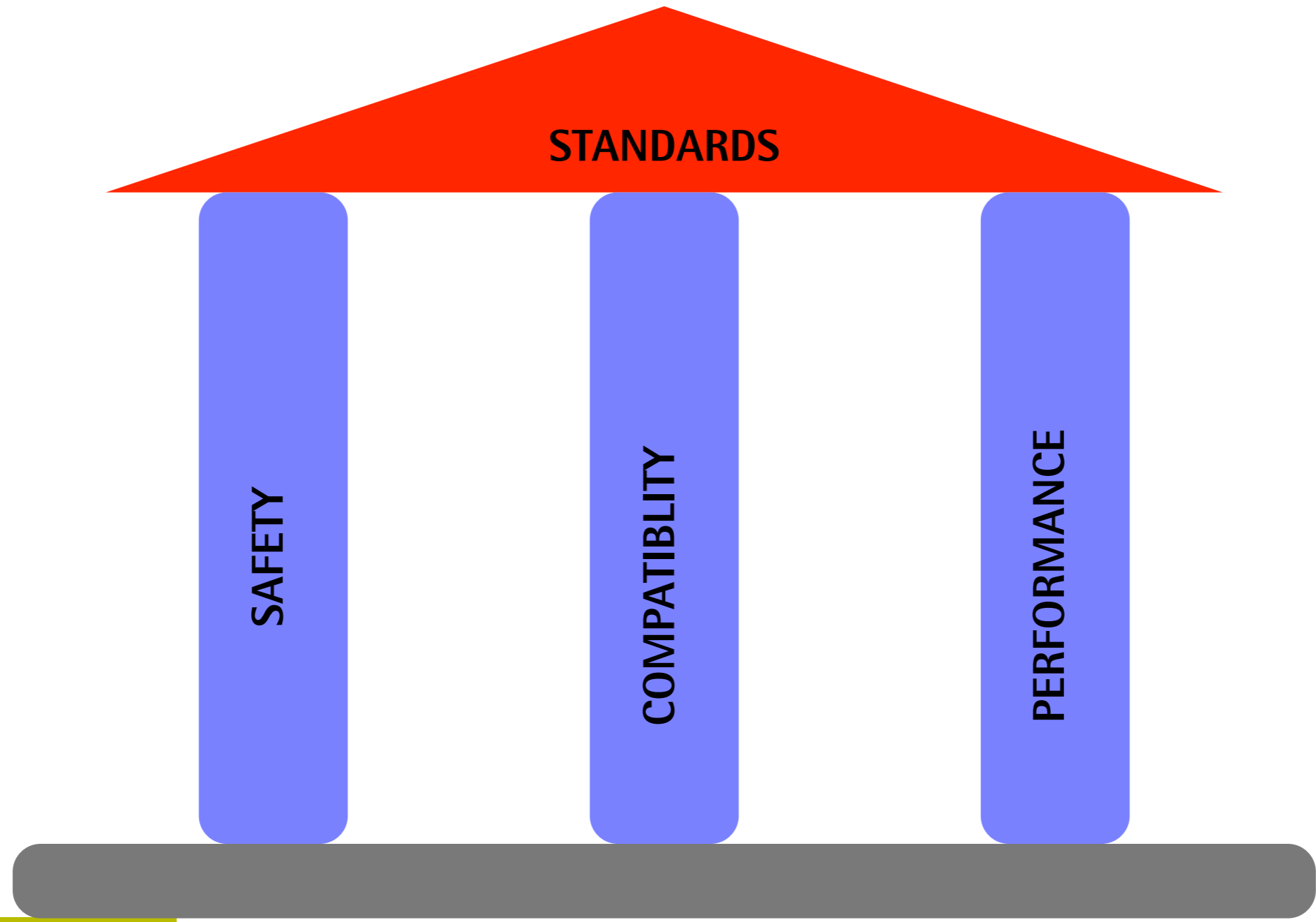
ERASMUS  
HOGESCHOOL  
BRUSSEL



# Introduction: the EV standardization landscape



# The House of Standardization



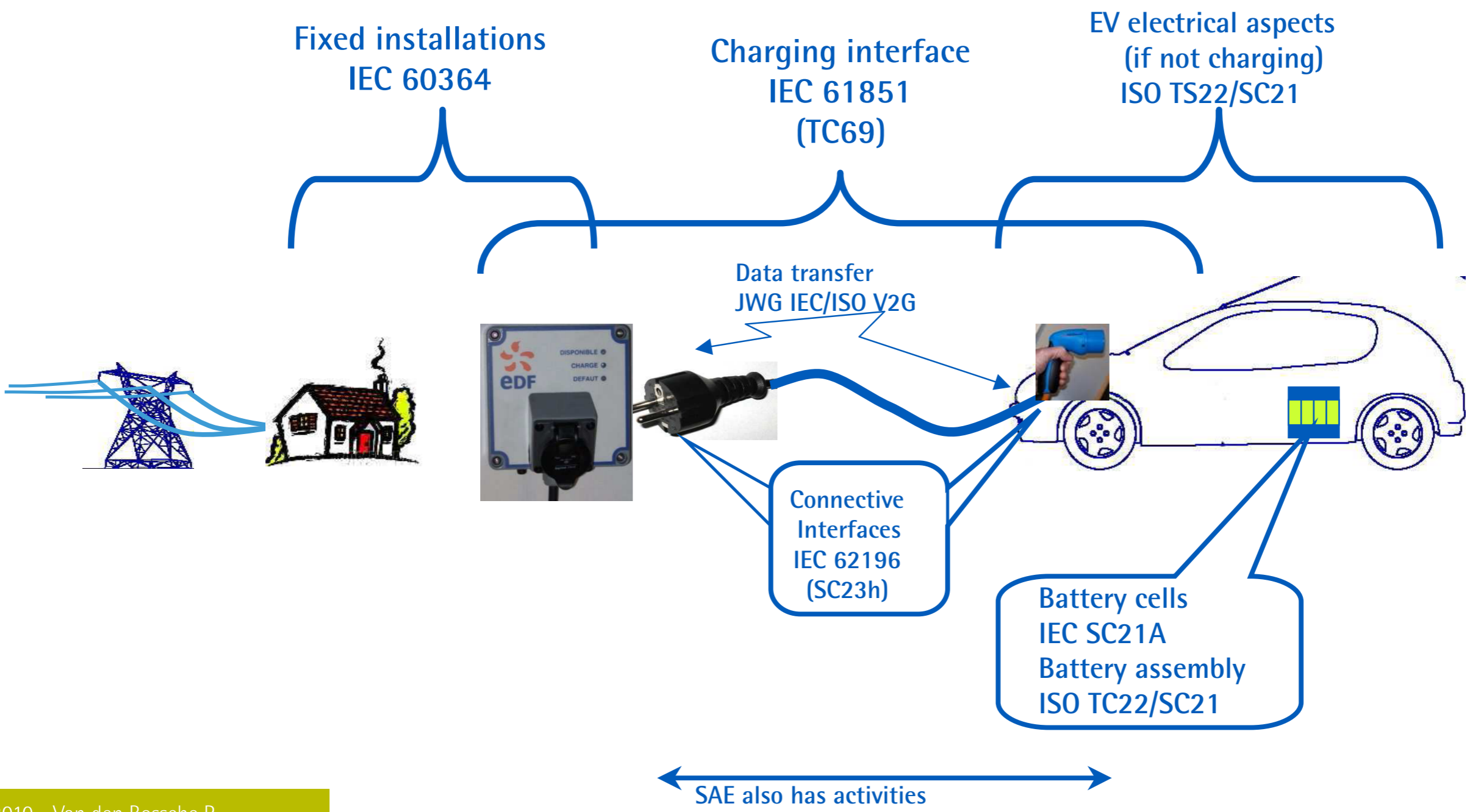


# The electric vehicle

- Is it a Car

- or is it an Electrical Device?

# Committees in charge



# A Chequered Past



- Specific EV standardization work
  - Started around 1970 in the global committees
- Conflict of competence domains
  - Who should do the work
  - Background of committees
- Differences in standardization culture
  - Automotive
  - Electrotechnical

# Different viewpoints

Car OEM	Electrotechnic
<ul style="list-style-type: none"><li>● Vehicles are products for world wide market</li><li>● Vehicle manufacturer has full product responsibility</li><li>● Consequently all automotive related standardization shall be concentrated on ISO TC22 "Road vehicles" including systems and components</li></ul>	<ul style="list-style-type: none"><li>● Vehicles charging are connected to electric supply and shall comply to all relevant standards for electric devices</li></ul>





# Common viewpoints

- Minimize number of standards
- No conflicting standards
- No standards for where there is no demand

# Division of labour

ISO TC22 SC21	IEC TC69
Aspects related to the electric vehicle as a whole	Aspects related to electrical components and electric supply infrastructure

- ISO/IEC steering committee
- Outstanding issues



# Standards versus Regulations

- Standards

- Voluntary documents obtained by consensus
- Technical committees with engineers

- Regulations

- Legally binding documents
- Issued by government
- Standards may find their way into the law



# Type Approval Regulations

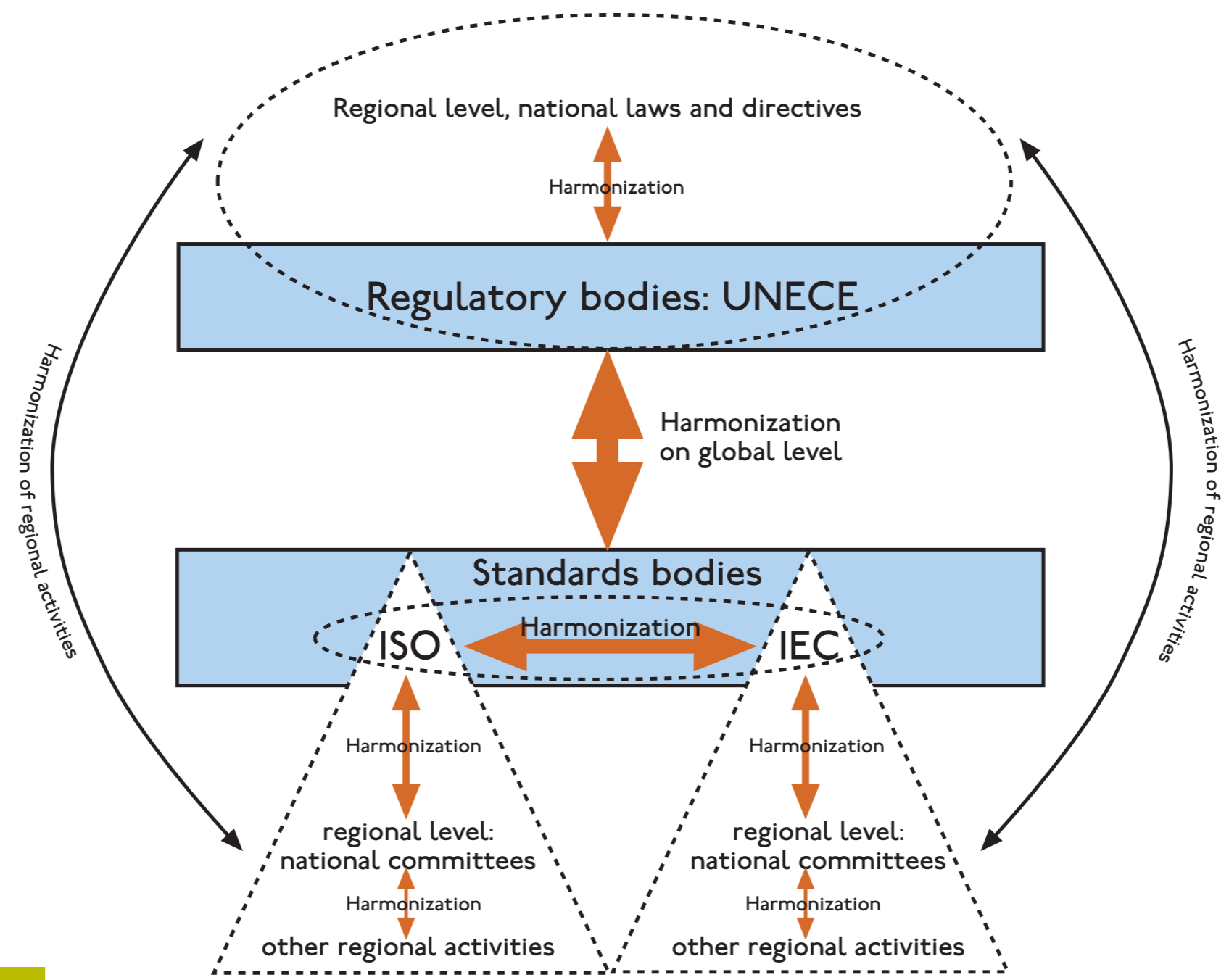
- UNECE – United Nations Economic Commission for Europe
- Now adopted by most countries
- Regulation 100 – electric vehicles
  - Mandated by EU



# Interaction Standards and Regulations

- «New Approach» not yet adopted for road vehicles
  - UNECE regulations are UN matter, not EU
- Infrastructure standards such as 61851 are harmonized standards in Europe
  - Application of Low voltage directive on charging equipment
  - System boundary issues

# Standardization landscape



ERASMUS  
HOGESCHOOL  
BRUSSEL



# Charging standards

# Safety standardization issues



- Protection of personnel
- Specific risks
  - Outdoor environment
  - Public spaces
  - Mechanical strain
  - Use by non-qualified personnel





# Charging infrastructure standards

- IEC 61851:2001 - Electric vehicle conductive charging system
  - Part 1: General requirements (FDIS level)
  - Part 21: Electric vehicle requirements (CD level)
  - Part 22: a.c. charging station requirements (CD level)
  - *Part 23: d.c. charging station requirements (NP level)*
  - *Part 24: d.c. charging station communication (NP level)*
- IEC TC69

# Definition of charging modes



- Mode 1 charging: non-dedicated outlet
- Mode 2 charging: non-dedicated outlet with in-cable protection device
- Mode 3 charging: dedicated outlet
- Mode 4 charging: d.c. connection



# Mode 1 charge

- Use of standard, non-dedicated socket-outlets
- No communication
- Earthing and GFCI/RCD are essential for safety
  - Compulsory in all new electric installations
  - Not guaranteed in legacy installations
- Not allowed in certain countries
  - May be allowed for private premises
- Most widely used system today
- Perfectly safe if used properly



# Mode 2 charge

- Use of standard socket-outlets
- In-cable or in-plug protection box
- Initially a transitory solution in USA
- Now: renewed interest from OEM to replace Mode 1
- Plug is not protected!

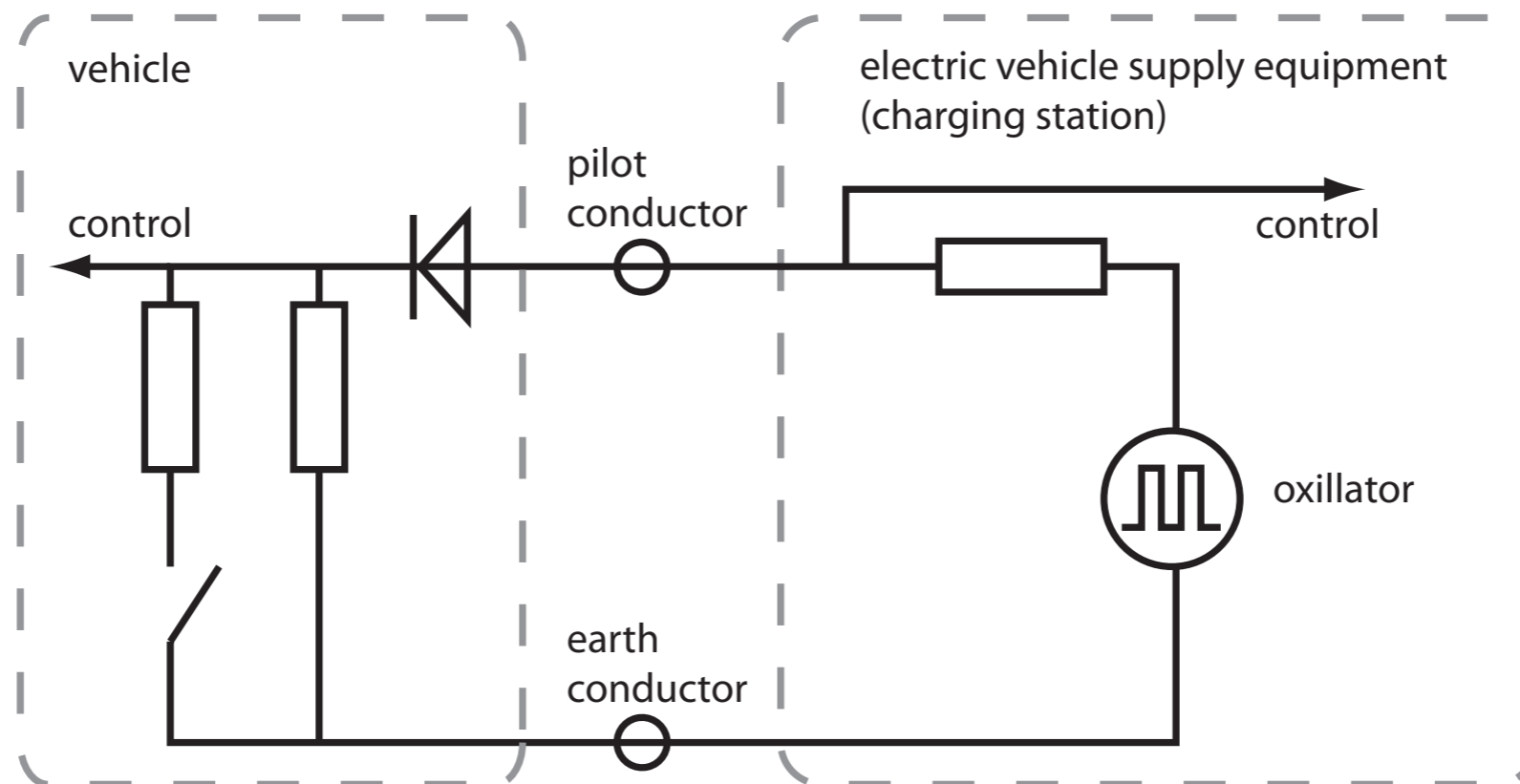
# Mode 3 charge



- Dedicated socket-outlet for EV use
- Protection with control pilot function
  - Verification of correct connection
  - Socket is dead if no vehicle is present
  - Integrity of earthing
  - Ampacity of charger
- Essential for public infrastructure

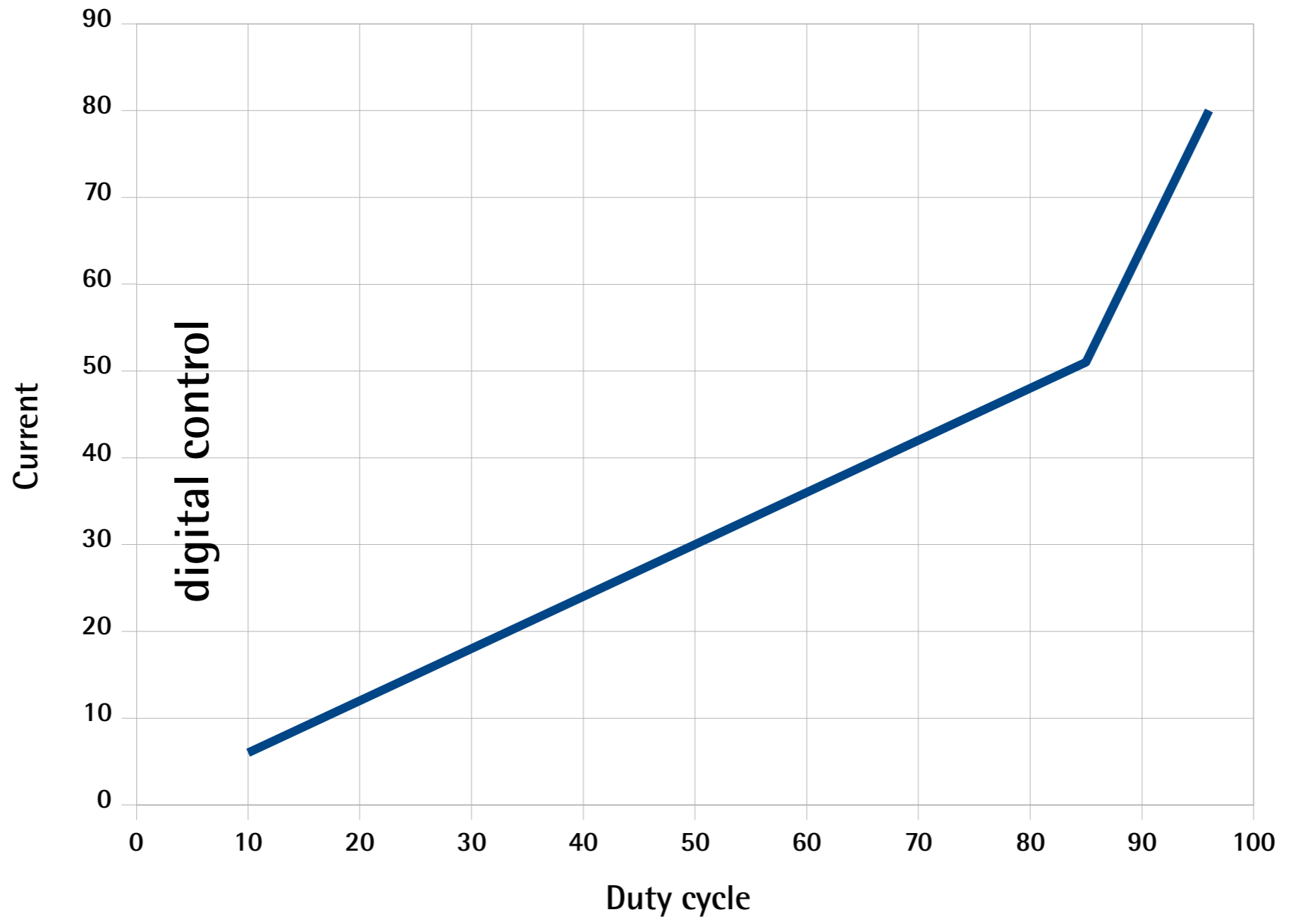
# Hard-wired control pilot

- First degree of communication
- Switch on vehicle to enable charging
- Ampacity control

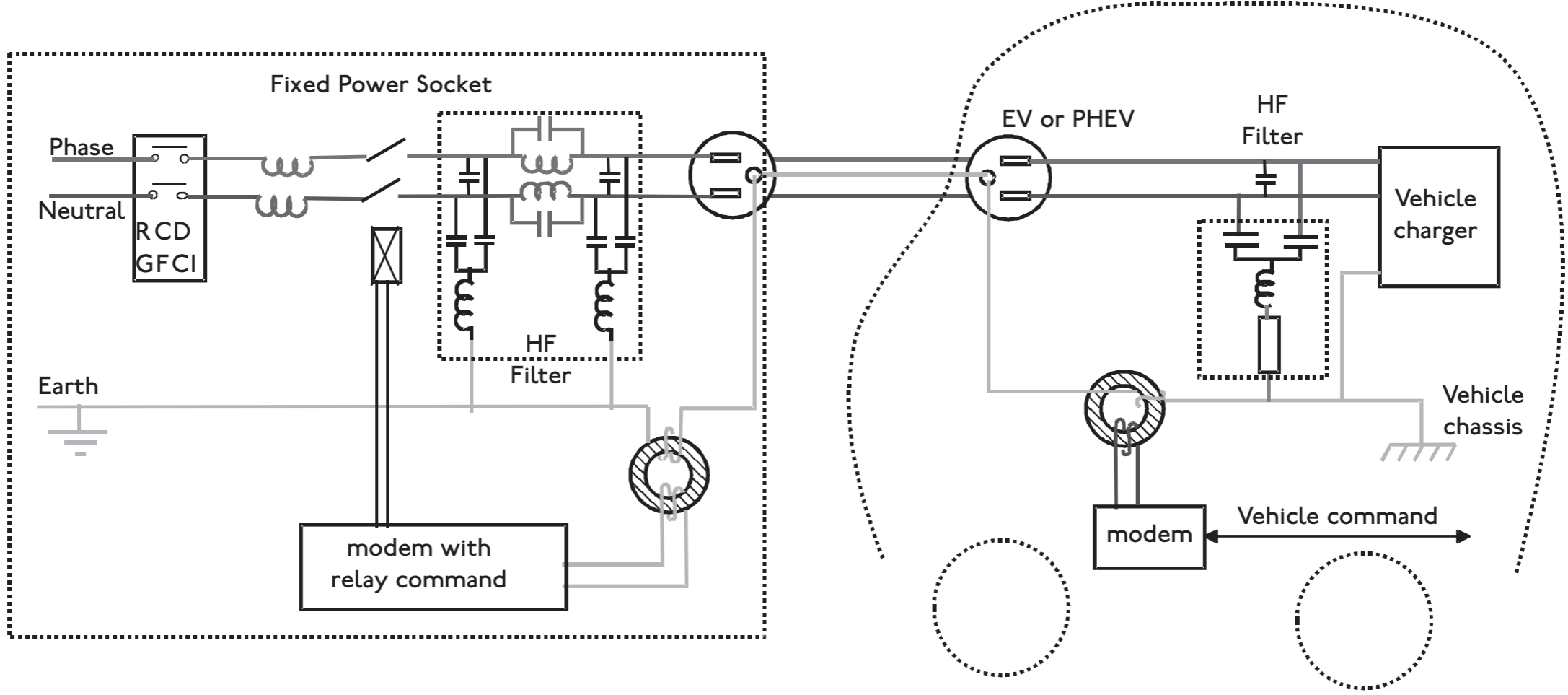




# Control pilot duty cycle and ampacity



# PLC control pilot







# Battle of the Modes

- French-German car OEM in favour of Mode 3 only charging, with Mode 2 transitory solution for home charging
- User support for Mode 1 which is safe enough if used correctly
  - Northern countries – car heaters

# Mode 4 charge



- Stationary charger
- d.c. connection
- Heavy and expensive infrastructure
- Communication needed between battery and charger



ERASMUS  
HOGESCHOOL  
BRUSSEL



## Accessories: plugs and sockets

# Standard accessories

- Domestic accessories not well suited for heavy EV duty
- Industrial accessories (IEC 60309-2) preferable





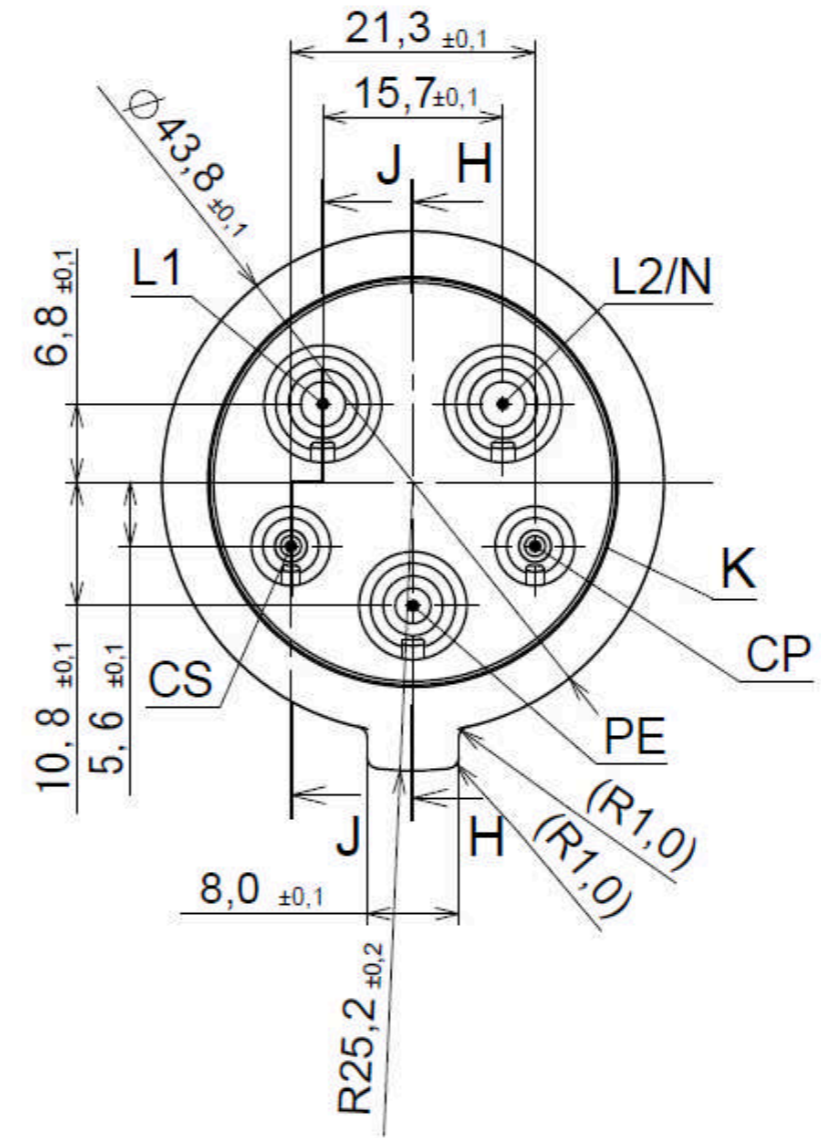
# Dedicated EV accessories

- Ongoing standardization work IEC SC23H
  - IEC 62196 - 2: Dimensional interchangeability requirements for pin and contact-tube vehicle couplers
    - Three designs for a.c. plugs and connectors
    - Discussion on single solution, facing national regulations on items such as shutters
  - New NP for d.c. couplers

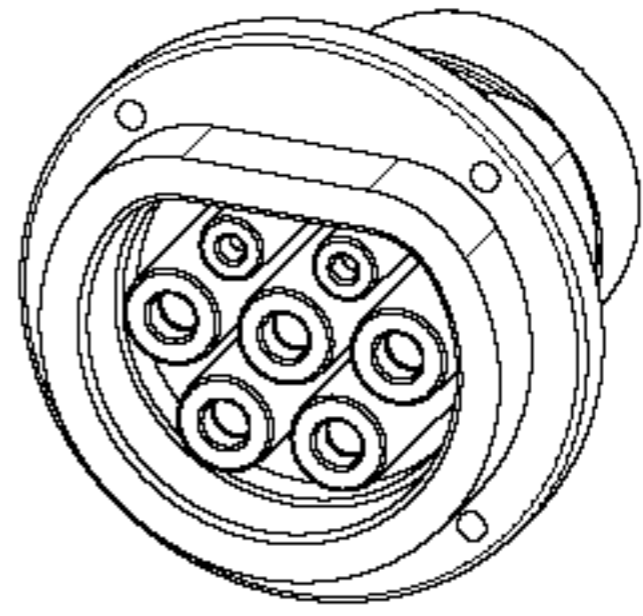
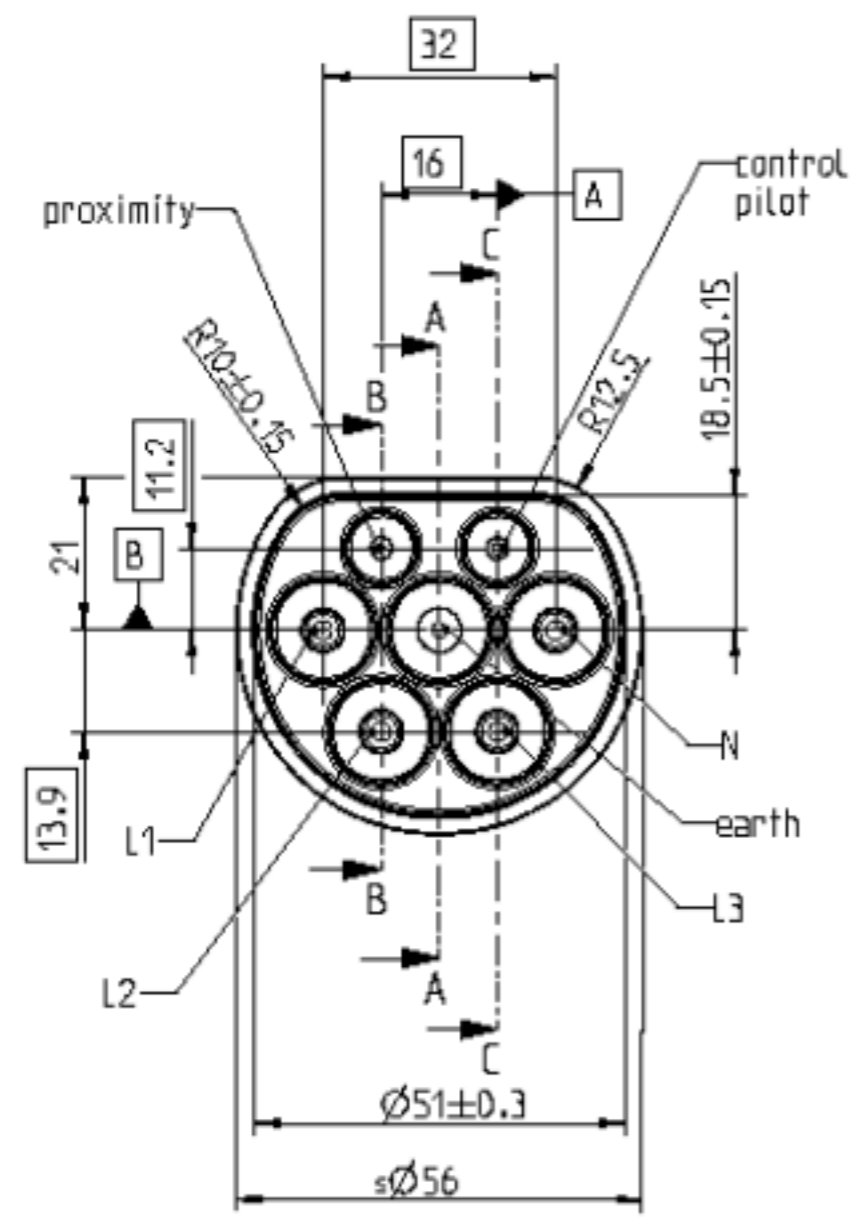


# Single phase 30A plug

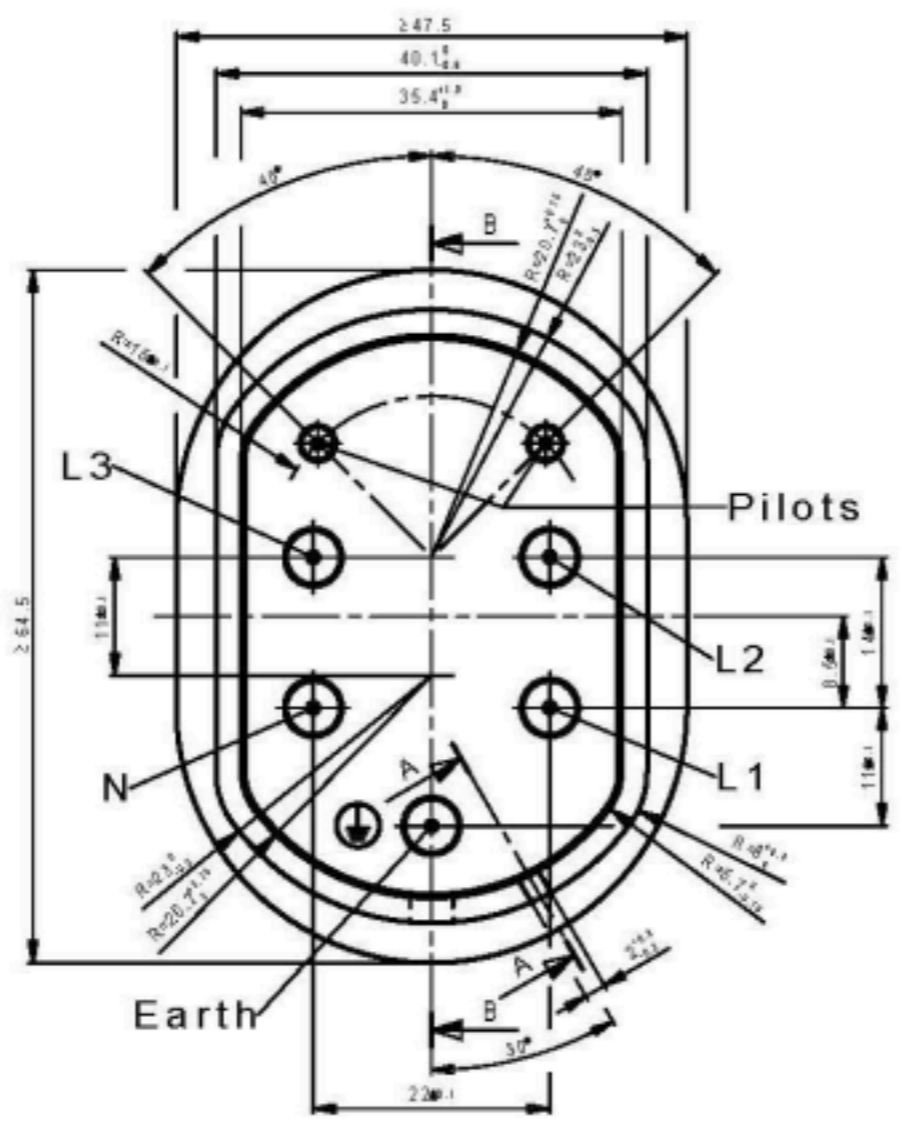
- USA-Japan
- SAE J1772



# Three phase plug (up to 63A)



# Three phase plug (32A)





ERASMUS  
HOGESCHOOL  
BRUSSEL



# Charging performance and the impact of EV on the grid

# EV Charging Levels



- Normal charging
  - Use of standard socket-outlet
- Semi-fast charging
  - Higher power available in domestic environment
- Fast charging
  - Dedicated high power connections



# “Normal” charging (“Level 1”)

- Standard power outlet
  - USA: 120V, 15A
    - 1,8 kW (with power factor 1)
    - “Charge speed”: 5 mph
  - 230V, 16A
    - 3,7 kW (with power factor 1)
    - “Charge speed”: 10 mph
- Universally available



# "Semi-fast" charging ("Level 2")

- Heavy single-phase outlet
  - 230V, 32A – 7,4 kW
    - "Charge speed": 20 mph
  - Generally available in domestic environment (32A = electric range)
- Three-phase outlet
  - 3x400V, 16A – 11 kW
  - Readily available in many countries



## “Fast” charging («Level 3»)

- Power  $\geq 20$  kW, up to 80% charge in 1/2 hour
- More expensive infrastructure
- Heavy cables: fixed to charging post
- Strain on batteries
- Strain on grid
- d.c. charging: external charger
- a.c. charging: via traction inverter



# Do we need fast charging?

- Availability of fast charging infrastructures provides a psychological advantage
- Fast charging does not allow for final charge
- Semi-fast (and even normal) charging provide good enough occasions for opportunity charging
- Nighttime charging creates an ample time window with cheap power

# Slow charge will be predominant

Fast Charge

charge < 6 kW



5%

Fast – Expensive  
Few



95%

Overnight – cheap – efficient  
available everywhere



# Smart grid issues

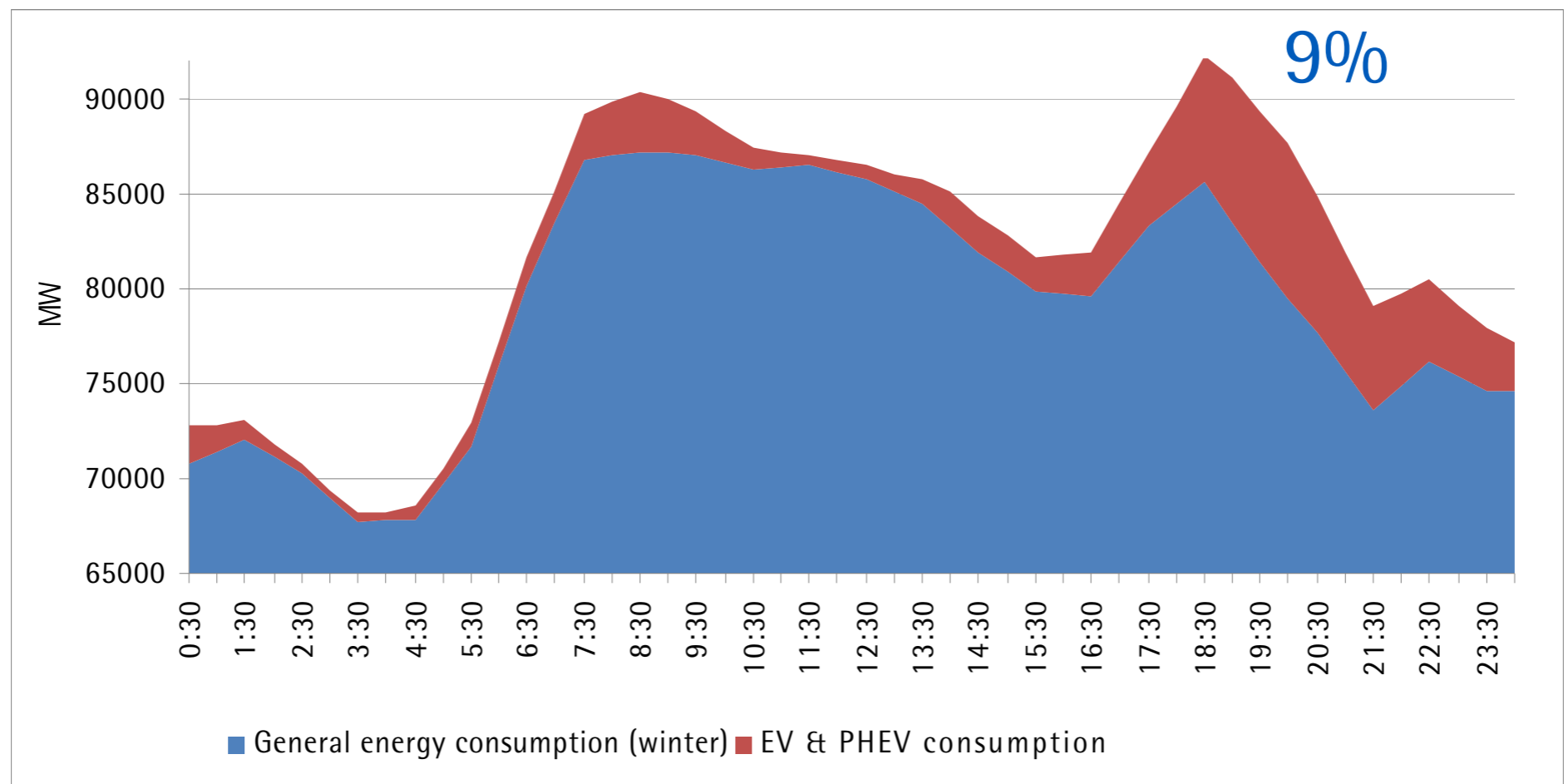
- Influence on the grid
  - No major problems on macro level taking into account evolution of generic energy consumption
  - Problems may occur with local distribution networks





# Influence on the grid

- 2025 forecast (EDF)

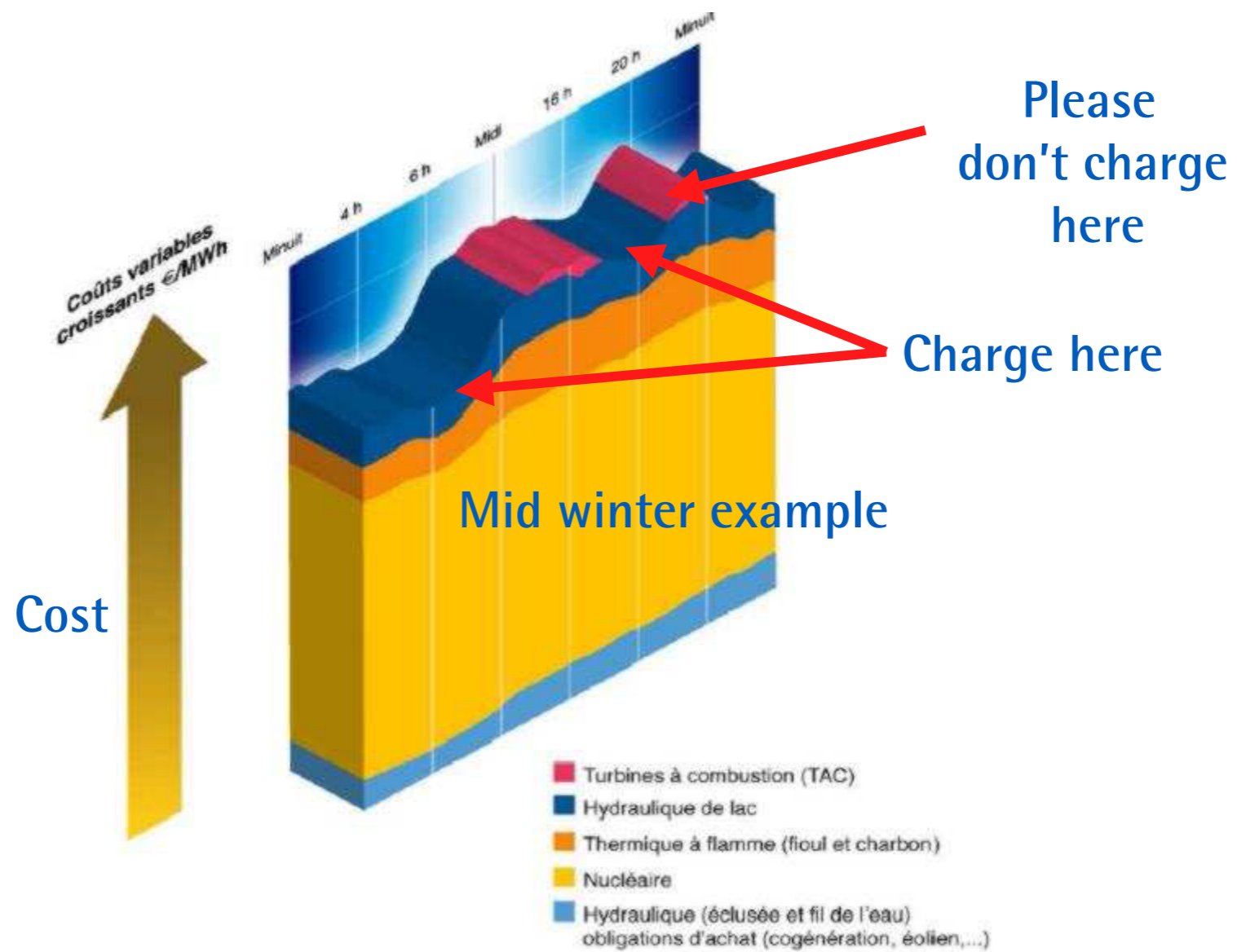


2025



# Smart grid

- Optimization of charging times



# Vehicle to grid



- Bidirectional energy flow
- Payment for energy charged
- Compensation for energy delivered
- Intelligent communication needed
  - energy metering
  - user readiness for charge

ERASMUS  
HOGESCHOOL  
BRUSSEL



# Communication issues

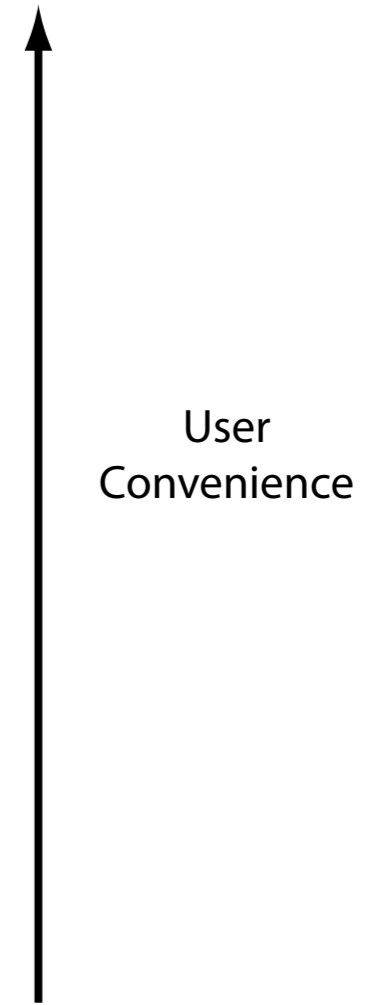


# Levels of communication

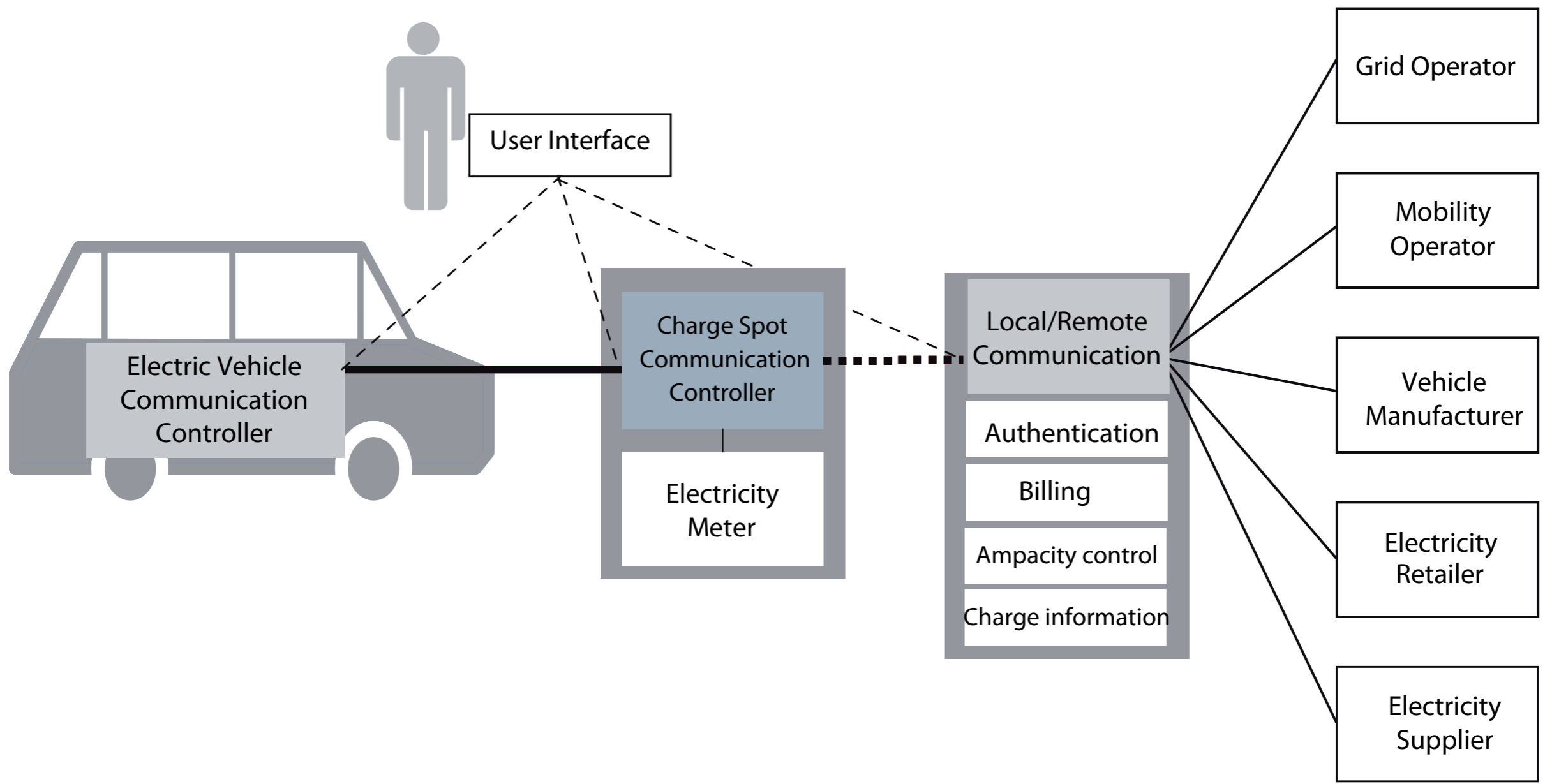
- Tariff information
- Charging process info
- Value added services
- Capability information
- User authentication
- Grid information
- Dynamic ampacity control
- Local ampacity limit
- Safety monitoring

} Minimal communication with pilot function

} Communication required for remote billing and dynamic grid load control



# Actors involved



# Communication scenarios

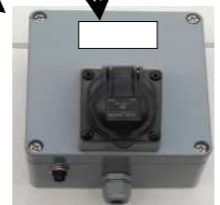
## Options for communication via the PLC Socket

the system can operate without communication

option LCD screen (possible but to be avoided)



PLC included for compatibility with smart meters and V2G



other solutions for domotic, parking and urban use  
- ZigBe (included)  
- WiFi (possible)  
- RFDI etc.

## Options for communication in the vehicle



the client only has to confirm the electricity order

WiFi, G3 etc.

communication with electric utility via telephone or internet for billing

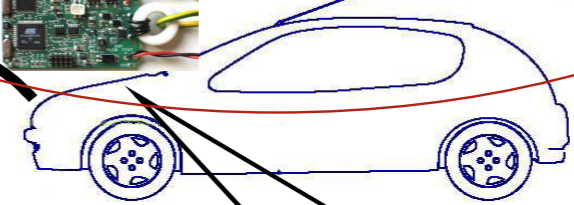
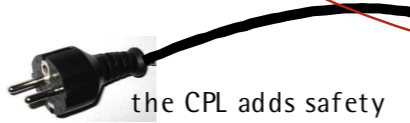
all charge information and credit is displayed on the telephone (and/or vehicle Navi with CAN)



BleuTooth (nearby communication with telephone etc.)



the CPL adds safety and transmits energy information



Option CAN - all options are available for display and diagnostics

the new PLCB card also includes pilot wire



diagnostics



# Use cases



- Definition of potential use scenarios
- Example: "Plug & Charge"
  - User plugs vehicle into the charge spot
  - Vehicle sends its ID to the charge spot to get authenticated by the clearinghouse through GSM
  - Authentication is successfully processed
  - Grid and tariff parameters are negotiated
  - Charging process starts automatically.



# Communication channels



- Interaction with utilities
  - Dynamic ampacity control for smart grid
- Interaction with vehicle OEM
  - Vehicle diagnostics
- Interaction with service providers
  - Billing and roaming

# Problems



- Complex business models
- Energy cost for a charge versus communication cost or parking cost
- Danger of overspecification and overstandardization, incurring excessive costs
- K.I.S.S. principle !



# Communication Standardization

- Communication protocol vehicle - charging post
- Treated by JWIG IEC TC69 - ISO TC22 SC21 - ISO TC22 SC3
- ISO 15118: Road vehicles -- Communication protocol between electric vehicle and grid
  - Part 1: Definitions and use-case
  - Part 2: Sequence diagrams and communication layers
- Liaison with ITU and ETSI
- USA: SAE J2836

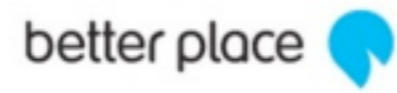
# Communication Research



- FP7 project "ELVIRE"



- **E**lectric **V**ehicle communication to **I**nfrastructure, **R**oad services and **E**lectricity supply



# ELVIRE



- Identifying business models and typical scenarios
- Bringing together automakers, suppliers, service experts, research and utilities
- Demonstrating the approach used to mitigate EV drivers' "range anxiety" through validation test.

ERASMUS  
HOGESCHOOL  
BRUSSEL



# Conclusions



# Where do we go from here

- Standardization is essential for safety and compatibility
- Communication standards should address actual needs
- The ideal of infrastructure standards
  - **Any vehicle should be able to safely charge, anywhere.**